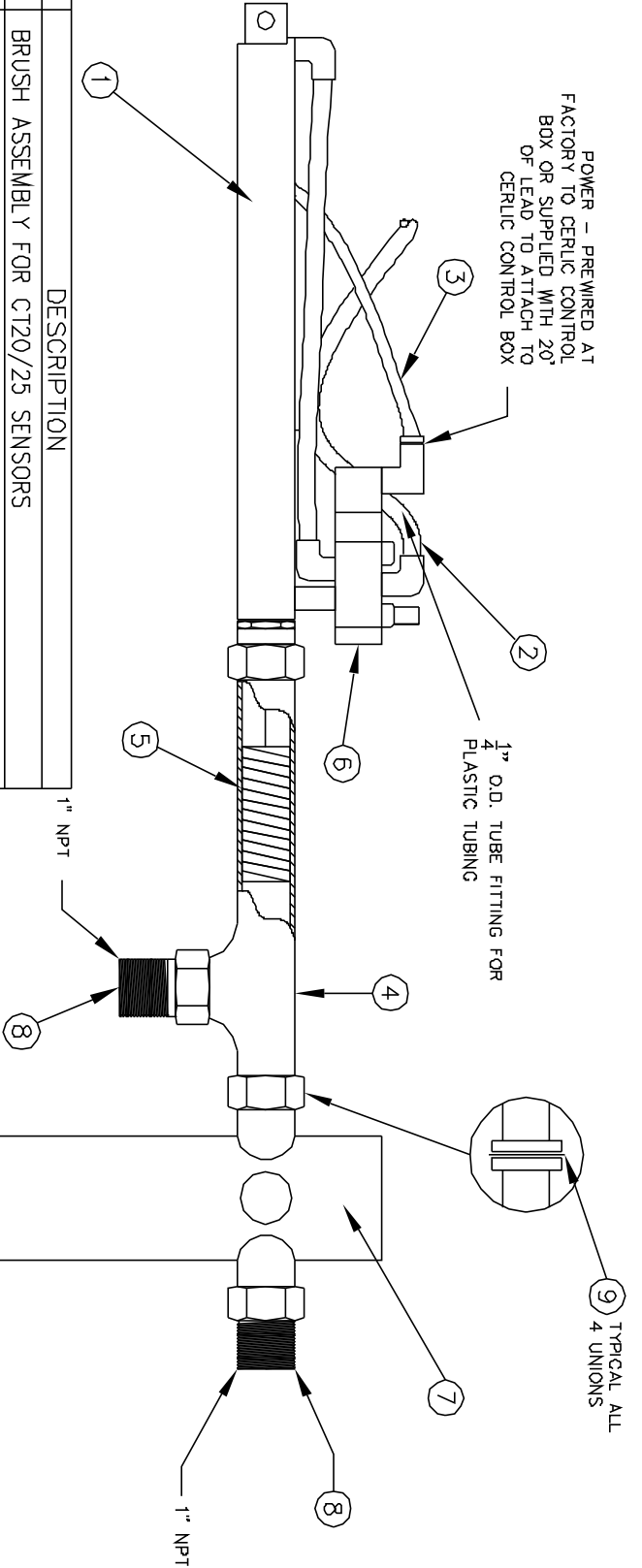


POWER - PREWIRED AT
FACTORY TO CERLIC CONTROL
BOX OR SUPPLIED WITH 20'
OF LEAD TO ATTACH TO
CERLIC CONTROL BOX



NO.	P/N	DESCRIPTION
1	11203178B	BRUSH ASSEMBLY FOR CT20/25 SENSORS
2	31704026	AIR CYLINDER, SS
3		1/4" O.D. AIR SUPPLY, 60-90 psig (4-6 bars)
4		POWER FROM CERLIC CONTROL BOX, 110/1/60
5		T ADAPTER, SS
6	30604047	BRUSH, REPLACE EVERY 6 MONTHS
7	31704027B	4-WAY SOLENOID VALVE, 110/1/60
8	11303364	CT20/25 SENSOR FOR CSP-mp CONTROL BOX
9	11305503	W/ TWO 1" NPT CPLGS
10	11305531	CTX20/25 SENSOR FOR BB2 CONTROL BOX
		W/ TWO 1" NPT CPLGS
		CTX20/25LC LOW SOLIDS SENSOR FOR BB2 CONTROL BOX
		W/ TWO 1" NPT CPLGS
		1" NPT COUPLING WITH SS METRIC NUT
		PTFE GASKET, METRIC
		SENSOR CABLE FOR CSP-mp BOX, 10 WIRE, 33' (10 m)
		SENSOR CABLE FOR BB2 BOX, PLUG ENDS, 33' (10 m)

Cerlic Environmental Controls, Inc

P.O. Box 420097
Atlanta, GA 30342
Phone (404) 266-3097
Fax (404) 256-3094



ASSEMBLY DRAWING FOR
CT20/25 SENSOR W/ AUTOMATIC
BRUSH ASSEMBLY

DRAWING NUMBER	PROJECT NUMBER	SCALE
105	CTX20/25	1/4

DATE	BY	CHKD	APP'D

REVISIONS	NO.	DATE	DESCRIPTION
	1		
	2		
	3		
	4		
	5		
	6		
	7		